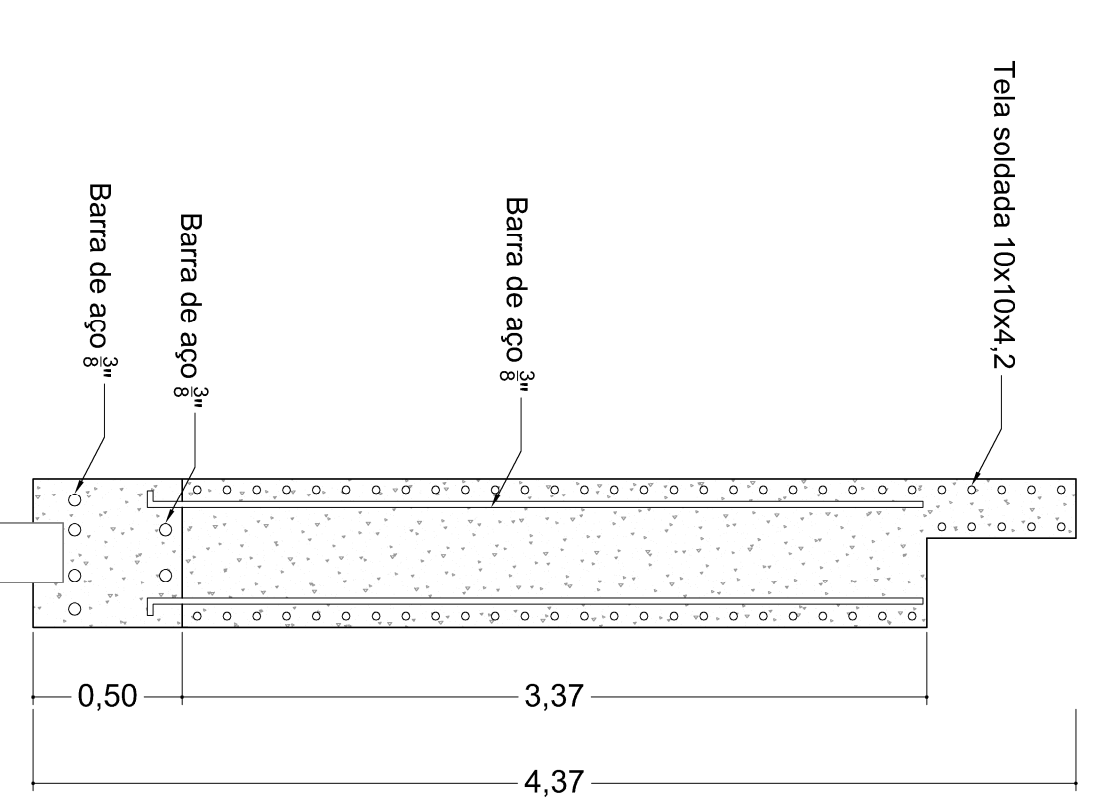
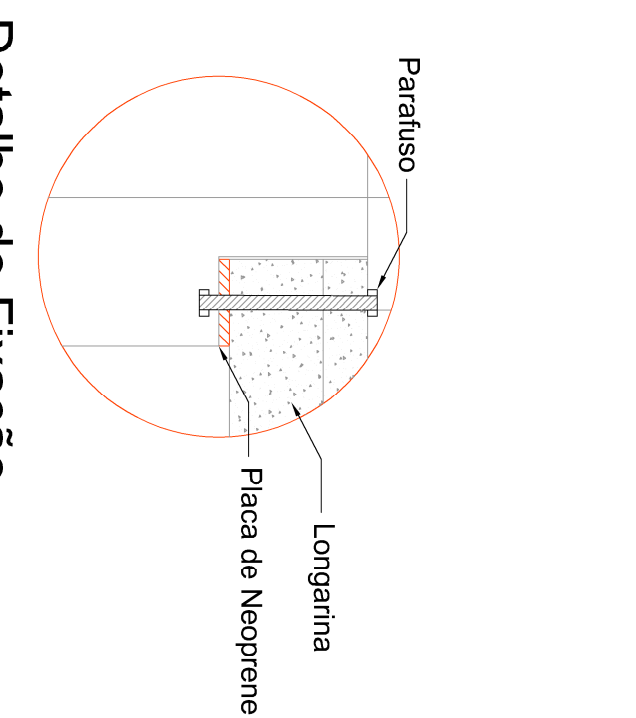
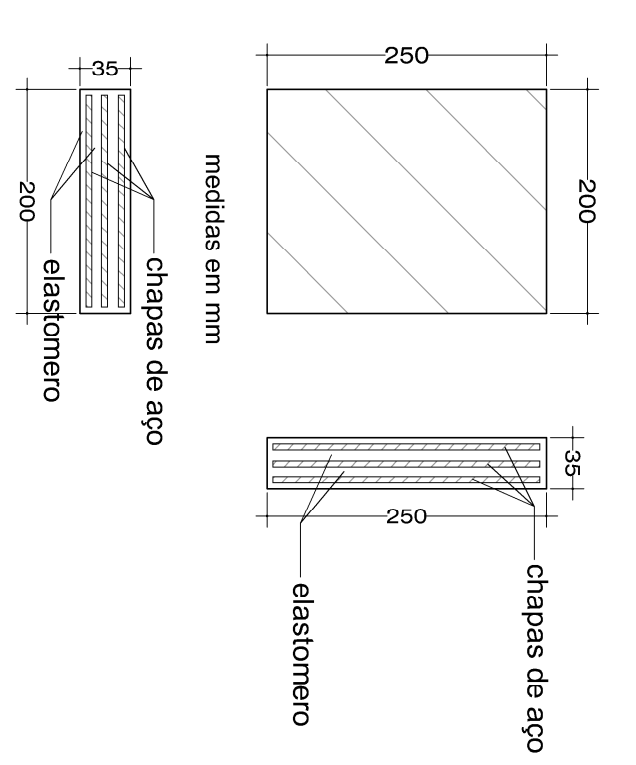


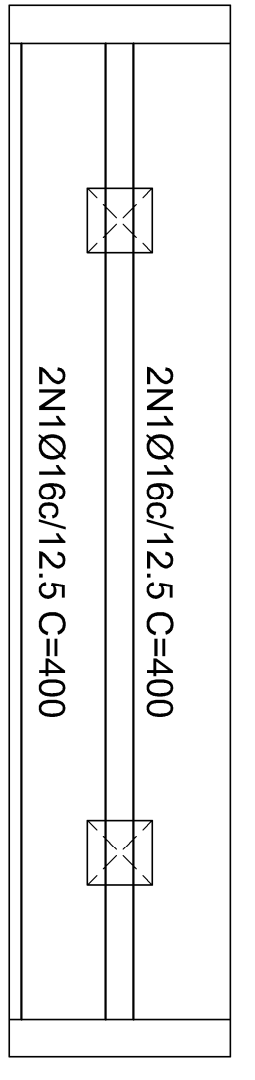
Planta Baixa - Ponte Campestrinho
 Bairro Campestrinho
 Esc. 1 / 100



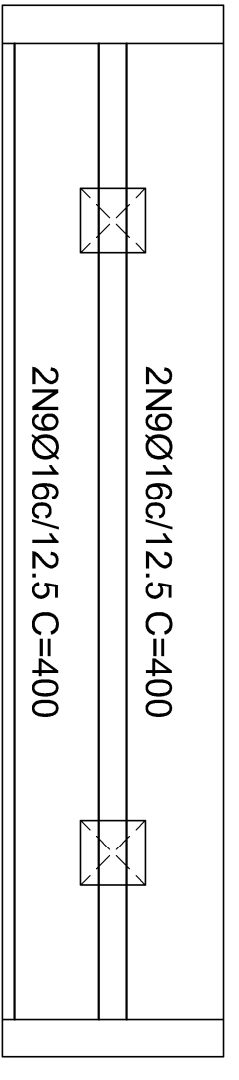
Detalle do Aparelho de Apoio - Neoprene Fretado (200x250/35)
 Sem Esc.



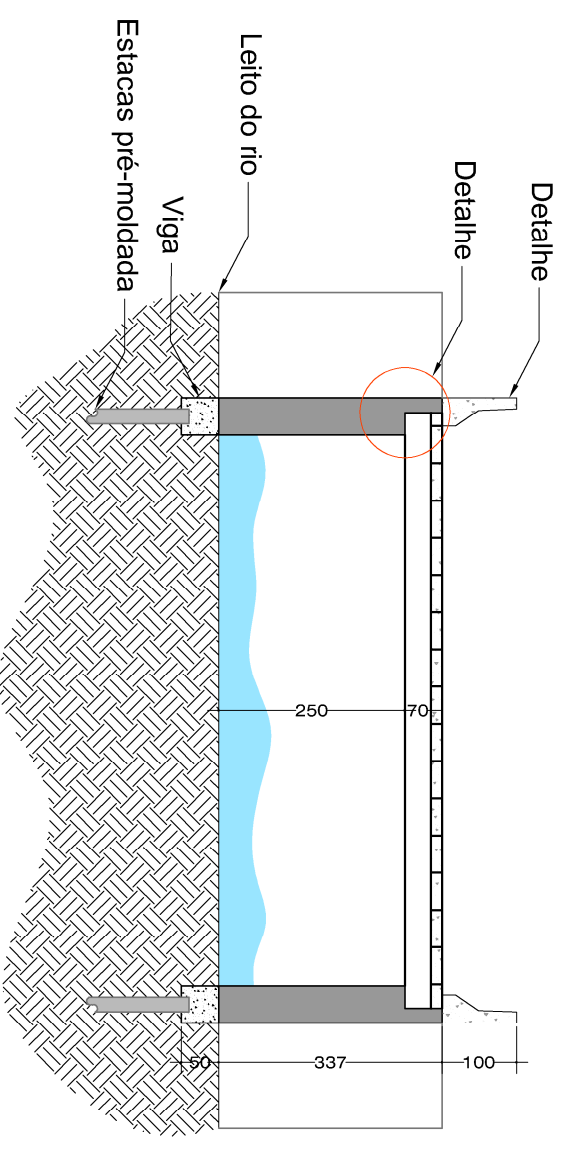
Detalle Ferragem
 Esc. 1 / 25



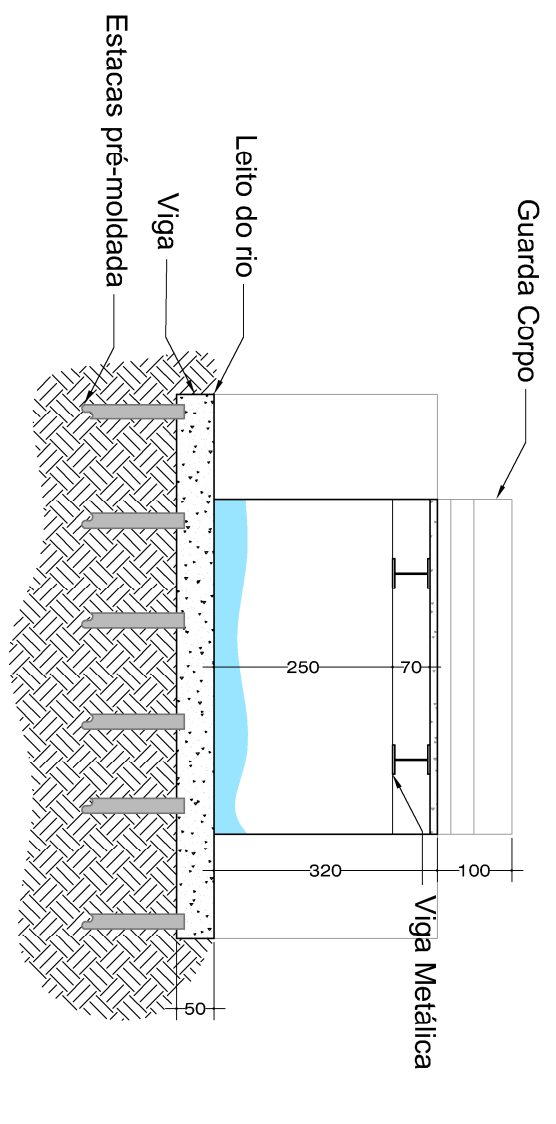
Armadura Longitudinal Inferior
 Sem Esc.



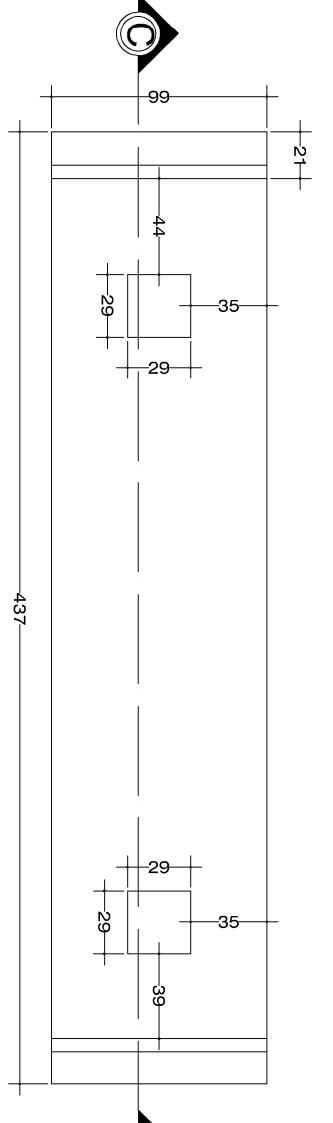
Armadura Longitudinal Superior
 Sem Esc.



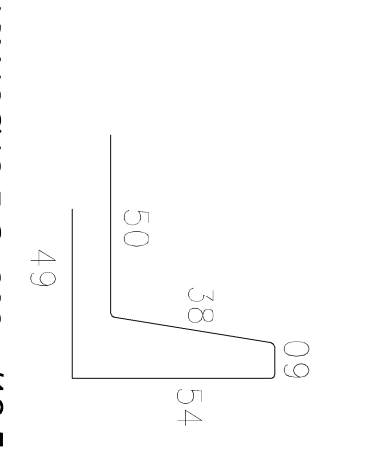
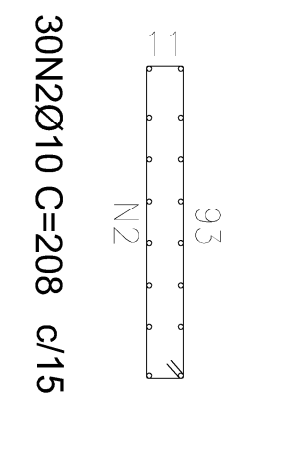
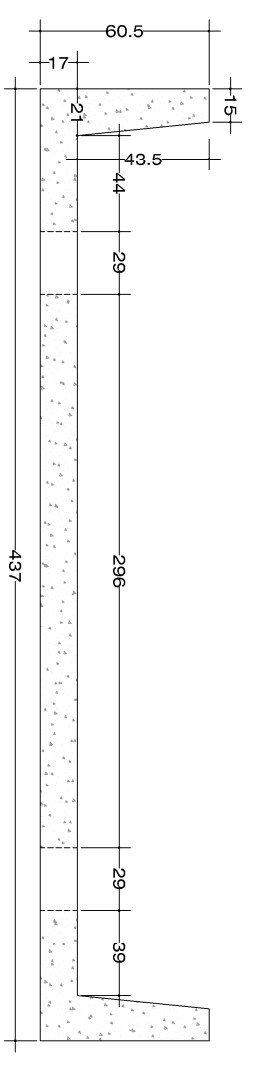
Corte AA
 Esc. 1 / 100



Corte BB
 Esc. 1 / 100



Dimensões da Laje da Ponte x5
 Sem Esc.



Projeto - Construção

Folha Única

Objeto
 CABECEIRAS PARA RECEBER PONTE METÁLICA

Localização
 RUA MARANHÃO
 COORDENADAS (LONGITUDE 46°36'59" O,
 LATITUDE 21°43'41" S,
 Bairro
 CAMPESTRINHO

Proprietário
 PREFEITURA MUNICIPAL DE DIVINOLÂNDIA
 Local : Divinolândia - São Paulo .

Proprietário
 Prefeitura Municipal de Divinolândia

Responsável Técnico
 Edmilson Aparecido Ribeiro
 Engenheiro Civil

C.R.E.A.-SP 5061033138

OBSERVAÇÃO:

